

## Inline Splice Closure

Model Number	Splice Trays
SPDN24K-AFK	1
SPDN48K-AFK	2
SPDN96K-AFK	4

### Product Summary

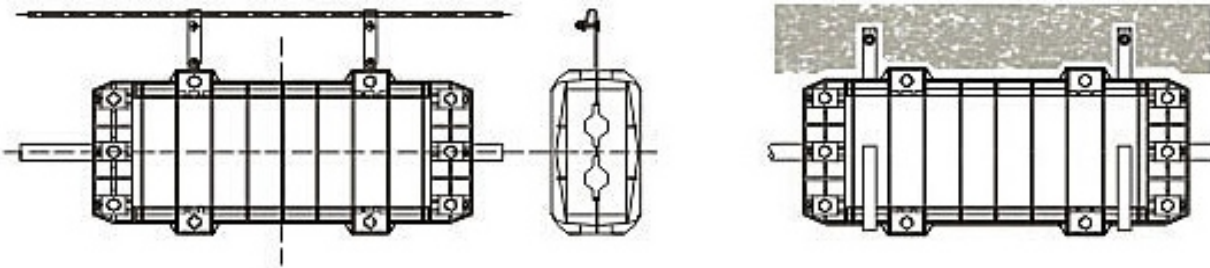
This product is suitable for such laying modes as overhead, pipelined, direct buried, etc. It adopts direct-passing or branch connecting ways that will protect the fiber cable when they are connected, branched, distributed and stored.

### Features

The product applies to the single-core and ribbon optical fibers and cables. It adopts a new sealing mode, which is unique, innovative and suitable for all sizes of optical fibers, with effective sealing performance, easy for operation and convenient for reuse.



### The sketch map of Internal Box



### Standard accessories

Inline Closure 1 set, sealing gasket 1set, splice tray :A/R , cable fixing device 1set, aerial mounting hook 1 set, splice protective sleeve, nylon tie, plastic plug 2 pieces, insulating tape 1 roll

### Optional accessories

Grounding device 1 set, valve 1set, pipe-lined hook 1 set, hexagonal sleeve 1 piece, protective tube

## Specification

Dimension ( mm )	432×186×100	Maximum capacity (single core)	96cores
weight ( kg )	3.4 ~ 3.8	Sealing method	Mechanical
Numbers of entrances	4 ( two entrances and two outlets )	Capacity of one tray	24cores
Diameter of suitable cable(mm)	Φ10 ~ Φ21		
Maximum numbers of trays	4	Insulating resistance	≥2×10 <sup>4</sup> MΩ
Environmental temperature	-40°C ~ +65°C	Voltage resistance	15KVDC/1 min, no